

## PEST RID NZ, Ridding the pests that bug you

Save up to 70% by exterminating your own pests!

Hand-selected products designed for New Zealand conditions available straight to your door.

### Professional Products

Safe, easy to apply, no mess, no sweat

The same products are used daily by professional pest-exterminators and cannot be bought in supermarkets or hardware stores.

Easy and safe to order. No confusion.

Free advice and support

Delivery- one price NZ wide, no matter how much you buy

Fast deliveries (2 - 3 business days)



### Ketch All Mouse Trap Instructions



Pest Rid NZ Ltd

49 Tomin Rd  
Glenview  
Hamilton 3206  
Phone: 07 8434343  
E-mail: sales@pestrid.co.nz

[www.pestrid.co.nz](http://www.pestrid.co.nz)

## Instructions



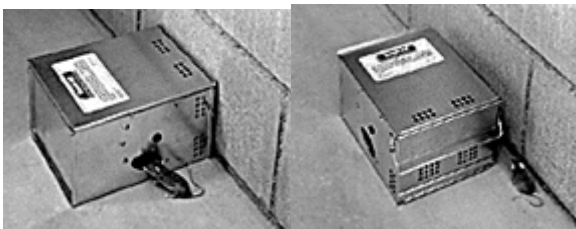
**SET**

The KETCH-ALL needs no bait and catches multiple mice in one setting. Wind the trap 6 to 8 half (180 degree) turns. Trap is properly set.



**CATCHING**

Mice will detect the entrance in the side of the trap with their whiskers. They will naturally investigate the tunnel and trip the paddle.



**PLACEMENT**

Place the KETCH-ALL 1 1/2" to 2" parallel to the wall or set perpendicular to a wall in a space where mice are known to travel.



**EMPTY**

Simply slide back the top lid, pull up the end plate and dispose of the mice.

### **Tips:**

Mice need a nesting place, and if they are exposed for a few hours, they might die. Therefore, it is always a good idea to place a cotton ball in back of the mouse trap so the mouse can curl up with the cotton ball.

One of the best food sources for baiting mice is peanut butter.

Mice like to run along the edges of the room, so place the mouse traps lengthwise along the wall. Place live mouse traps near where you last saw the mouse or by entrances into dark areas, such as by the couch, desk, or dresser.

If after a day and a night your mouse trap is still empty, move to a different location.

Release the mouse as soon as possible, check the trap in the morning. You may want to release mouse as far away as possible to prevent recapture.

### **PREVENTION**

Look for and rodent proof any places where rats or mice are gaining access to the premises. Common entry points are openings around service pipes, gaps near wall skirtings, broken under-floor ventilation grates, missing drainage grates, gaps under doors and trees against buildings giving access to roof spaces. Suitable materials for proofing are light sheet iron or tin, rolled up chicken netting and plaster made of sand and cement. Carefully check likely areas for signs of rodent activity every 2-3 months. Clear overgrown areas and regularly remove accumulations of refuse and old building materials to prevent harbourage.